

# Outdoor Light Box Profiles

(Silver Anodized, Silver Mill)

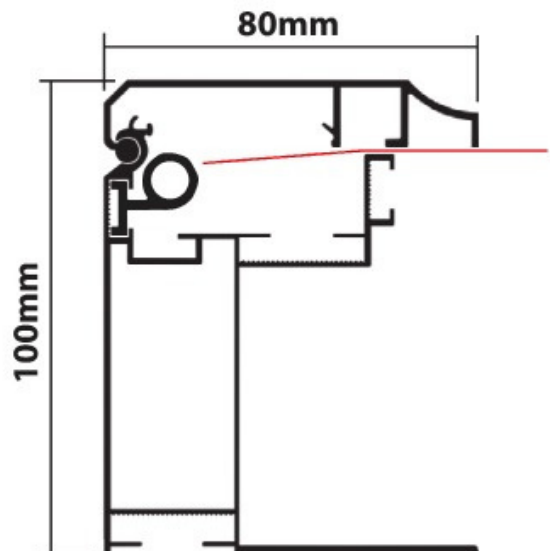
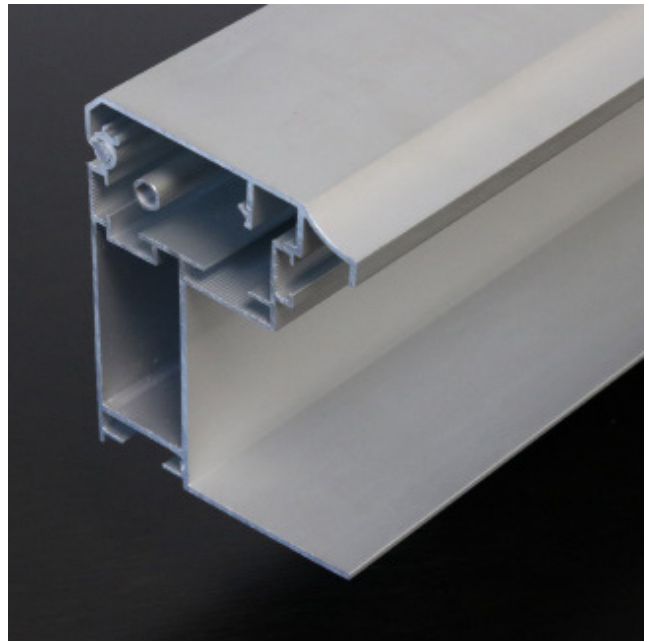
---

These light box profiles have been specifically designed to retain printed textiles for outdoor use while still making the change of print hassle free designed.

Light boxes are commonly used for advertising and promotional purposes, as well as for providing information or directions. Outdoor light boxes are designed to withstand various weather conditions and are made of aluminum.

# LSHBOUT100

This profile has a front snap cover for access to the retaining bar that secures the print material. The print can be mounted to the bar using cable ties through an eyelet in the print.

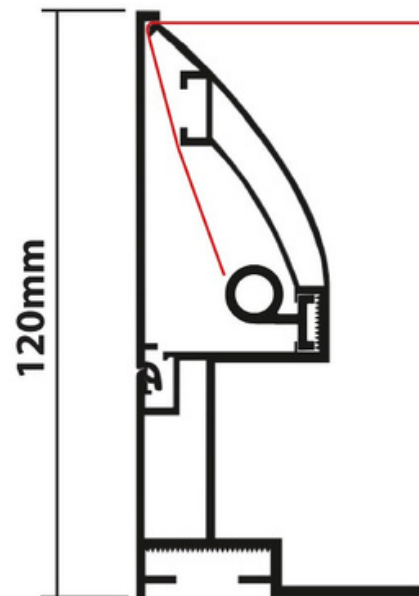
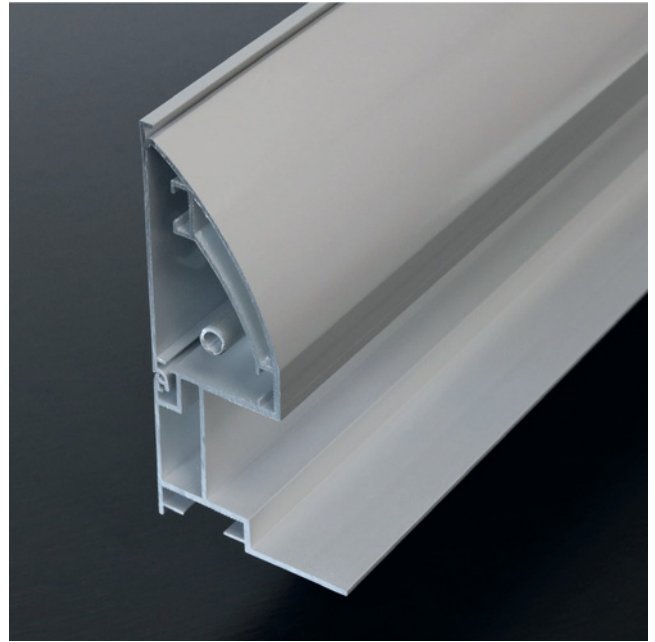


Product Code	LSHBOUT100
Return Depth	100mm
Material Type	6063 Aluminium Alloy
Material Finish	Silver Anodized
Material Length	5700mm
Weight Per Meter	2.2kg
Suitable for Illumination	Yes
Print Type	Textile Material
Print overhang for Mounting	30mm
Eyelet Spacing	200mm
Mounting Bar Support	200mm
Spacing Cover Spring Type	Shrapnel B
Illumination Depth	80mm

# LSHBOUT120

This profile has a side access snap cover for access to the retaining bar for the print material. The print can be mounted to the bar using cable ties through an eyelet in the print.

This profile is designed specifically to illuminate to edge of the print, which creates a borderless finish.

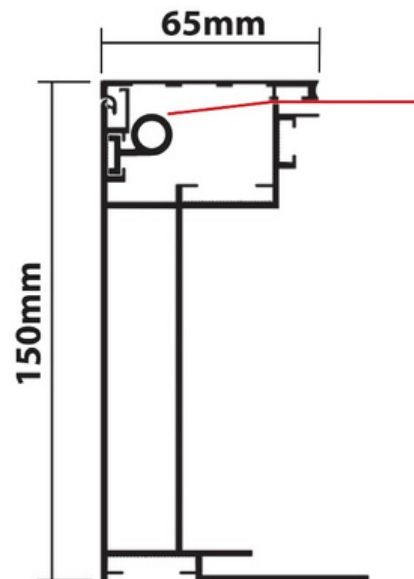
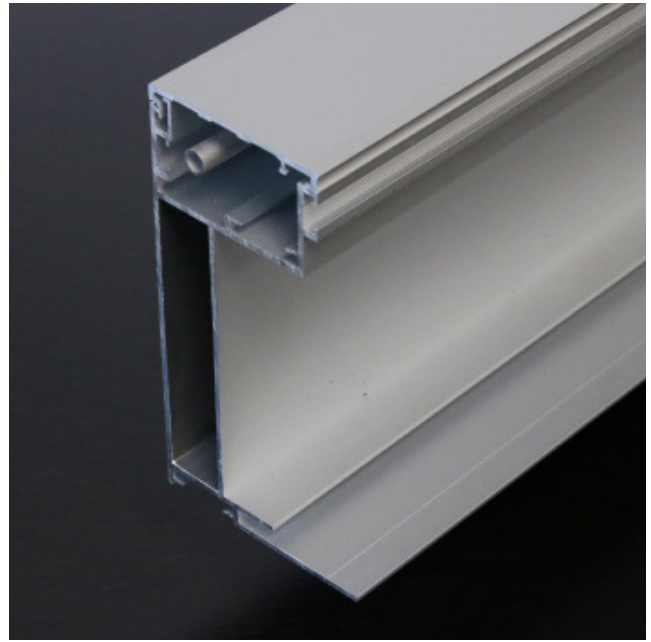


Product Code	LSHBOUT120
Return Depth	120mm
Material Type	6063 Aluminium Alloy
Material Finish	Silver Anodized
Material Length	5700mm
Weight Per Meter	2.1kg
Suitable for Illumination	Yes
Print Type	Textile Material
Print overhang for Mounting	40mm
Eyelet Spacing	200mm
Mounting Bar Support	200mm
Spacing Cover Spring Type	Shrapnel A
Illumination Depth	120mm

# LSHBOUT150

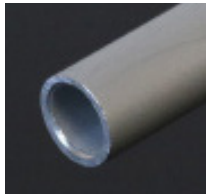
This profile is suggested for larger format outdoor lightboxes.

This profile has a front access snap cover for access to the retaining bar for the print material. The print can be mounted to the bar using cable ties through an eyelet in the print.



Product Code	LSHBOUT150
Return Depth	150mm
Material Type	6063 Aluminium Alloy
Material Finish	Silver Anodized
Material Length	5700mm
Weight Per Meter	3.4kg
Suitable for Illumination	Yes
Print Type	Textile Material
Print overhang for Mounting	30mm
Eyelet Spacing	200mm
Mounting Bar Support	200mm
Spacing Cover Spring Type	Shrapnel A
Illumination Depth	140mm

# ACCESSORIES



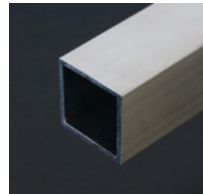
**LSHBRB**  
Material Support Bar  
8mm Diameter  
Aluminum  
5.7m Length



**LSHBSTR\_200x12x3**  
Straight joiner  
200x12x3mm M6 Thread  
Steel



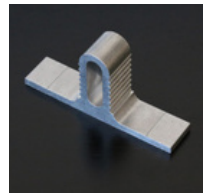
**LSHBRBB**  
Material Support Bar Bracket  
Steel  
M6 Thread



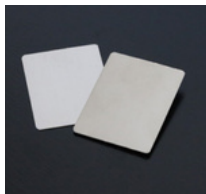
**LSBOX25X25**  
25x25mm Box  
Section For use with  
LSTR\_WP Aluminium



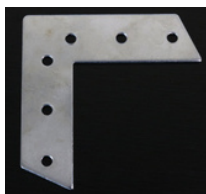
**LSHBSHRAPA**  
Shrapnel A  
For HBOUT120 &  
HBOUT150 Spring Steel



**LSTR\_WP**  
Bracket for LSBOX25X25  
Used to create support bar  
Aluminium



**LSHBSHRAPB**  
Shrapnel B  
For  
HBOUT100  
Spring Steel



**LSHBFLAT90\_25x2**  
Flat 90deg joiner 25x2mm  
M6 Thread  
Steel



**LSHBSTAND90\_25x2**  
Standard 90deg joiner  
12x2mm M6 Thread  
Steel



**LSHBSTR\_200x26x3**  
Straight joiner  
200x26x3mm M6 Thread  
Steel