

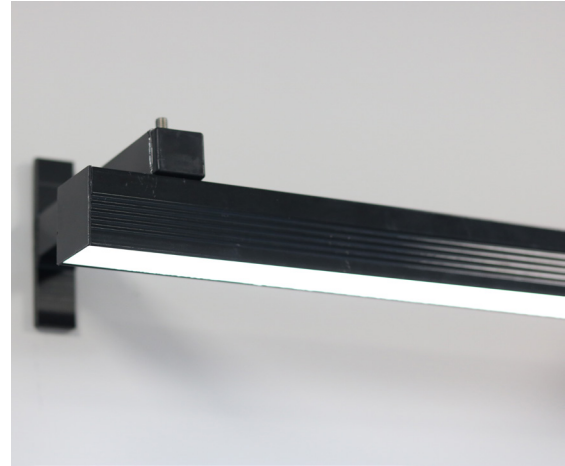
LED SLIM TROUGH LIGHTING

This specifically designed external lighting trough for fascia lighting from Lightsign. It is an Epoxy powder coated extruded aluminium profile designed and produced in Ireland. This fitting consists of IP67 rated LED tape with a power consumption of 14.4 watts per metre and a light output of 1000 lumens/metre. Fitted with an acrylic prismatic or opal diffuser it has enhanced diffusing qualities in the distribution of light over the working plane.

The trough comes complete with wall mounting brackets cut to a standard size of 150mm. The profile measures only 35x40mm which has a slim sleek look to finish off your fascia projects.

Available as a system in custom lengths made to the customers spec. these fittings carry a standard 12 month warranty and may be operated in temperatures ranging from - 25C to 50C.

This product is available in black, white or mill finish which can be powder coated to specific RAL colours, additional costs and lead times would apply. Led colour temperature is available in warm or cool white.



Power Supply	24V DC
Power Consumption	14.4 W/m
Colour Temperature	3000K or 5000K
Lumens	1000Lm/m
IP Rating	IP67
Material	Aluminium
Paint Colour	Black, White & Mill Finish
Warranty	2 years
Working Temperature	-40°C to 70°C
Certification	CE & RoHS

EXAMPLES

